



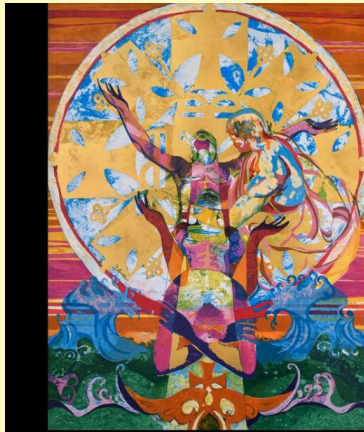
The Bridge

April 26, 2024



We are a
Reconciling in Christ
Congregation

[Click Here to read our
Welcome Statement](#)



Welcome to
Christ Lutheran
Easter 5

Baptism of the Ethiopian Eunuch
Paul Goodnight

5 Easter
Sunday
Sunday, April 28
10 am

LIVE STREAM
WORSHIP at 10
AM on SUNDAY

Just click on the link! That's it!

[Click here for Sunday's Worship](#)

You can also find the link on the homepage of our website:

www.clchhi.org

Worship Team

Preacher & Presider: Rev. June Wilkins

Reader: Rick Klotz

Communion Assistants: Gary & Leslie Heavener

Ushers: John & Joyce Prange

Greeters: Paulette Stefanik & Suzy Makalous

Altar Guild: Carola Dauchert

Our musicians this week are:

Rick Radcliff Piano, Doug & Elsa Felten, Susie Fidler, Steve Holm

Thanks to all our music leaders and volunteers!

To read Pr. June's Sermon from last week, click here:

<http://revjunewilkinssermons.blogspot.com/>



Our beloved member, Edie Marth joined the Church Triumphant on April 15th (her 95th birthday). Her funeral service will be held here at CLC on Monday, April 29th at 10:30am

MARK YOUR CALENDAR WEDNESDAY NIGHT WITH PURPOSE STARTING APRIL 24 FOR 4 WEEKS



FREEFALL - FAITH AS A PARACHUTE

Learning to trust in times of fear and worry

Be part of our discussions as we discuss faith in times of struggle. We will take a closer look at God, Jesus, Salvation and Prayer, all essential ingredients on the quest to grow our faith and trust.

We meet at 5:30PM and start with a meal before we learn, discuss, build community, and grow in faith together.



Flower Arranging

We need flower arrangers for our Sunday Altar!

We have a fund for purchasing flowers, you can arrange them here or at home and bring the arrangement in on or before Sunday Morning.

We'll teach you how to do everything.
No experience required!

If you would like to participate in this ministry, contact Nan Stafford 540-230-2388



Ladies Out to Lunch
TODAY, Friday, April 26, at 11:30 am.

Join your friends at Crazy Crab North end for lunch **TODAY, April 26, at 11:30 am.** Delicious food, fun conversation, and many laughs. Please email Suzy Makalous at s.makalous@gmail.com

Men's Out to Lunch
Monday, May 6, at 11:30 am.

Come join the Men of CLC for lunch at Benny's Coastal Kitchen, on Shrimpers Row just off Squire Pope at **Monday, May 6, 11:30 am**. Let's chat! Please let Ray Makalous know you are coming Rmakalous@gmail.com.

FOUR WEEK SERIES ON ADDICTION At St. Andrew by the Sea

Thursday nights at 7pm, April 25 – May 16, St. Andrew By the Sea is hosting a four week series about understanding addiction. This is designed for families, friends, and loved ones who want to understand, support, and heal together.


It's led by Dr. Gerard Love an addiction science and recovery specialist.

No registration is required.

'Helping From the Sidelines'

Understanding your loved one's substance use disorder from afar


Is someone you care about facing the challenges of addiction? This FREE 4-week series covers a range of essential topics from understanding addiction and its effects to building healthier relationships and finding emotional balance. This series is for families, friends, and loved ones who want to understand, support and heal together.



Dr. Gerard Love is an addiction science and recovery specialist who has worked in the field for more than 35 years. His areas of expertise include substance use disorder treatment and recovery, collegiate recovery, and diversity training. Love is currently a faculty member at Hazelden Betty Ford Foundation's Graduate School of Addiction Studies where he teaches Family Counseling and supervises graduate level interns.

Dr. Gerard Love
FACILITATOR

4 Thursdays at 7:00 pm
St. Andrew By-The-Sea UMC
20 Pope Avenue, Hilton Head 29928
standrewbythesea@gmail.com
843.785.4711
hhiumc.com
No registration required



Week 1: Welcome and Introduction
Thursday, April 25
"Where does addiction come from?"

Week 2: Understanding Stages of Addiction
Thursday, May 2
"Why does my loved one keep returning to use?"

Week 3: Issues and Concerns of the Family
Thursday, May 9
Boundary setting and detaching yet still loving

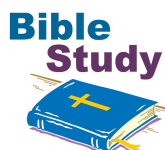
Week 4: Does my loved one need treatment?
Thursday, May 16
"How should I participate and support?"

...Start your journey towards understanding

MEMBERSHIP



If you would like to become a member (full time, part time, or associate) of Christ Lutheran, contact Pr. June, pastorjune@clchhi.com or Silke at silkepyrlik@clchhi.com Or see them on Sunday!



Wednesday ZOOM Bible Study
11 a.m. via Zoom

"Examining Our Faith" March 3 through May 26, 2024

**We will NOT be having studies on April 24, May 1 and May 8.
We'll pick up again on May 15.**

Participants in this study will reflect on God's steadfast love and faithfulness, modeled through God's covenant with Israel, Jesus' healing miracles, and the hope we share in his resurrection. We are invited to respond by giving God glory through faithful witness in word and deed.

The members of this study group are from various ELCA congregations across the country who share a common desire to grow and serve. If you can't make it every week, that's okay. We'll welcome you as often as you can join us. Contact [Kathy Mork](#) for more info.

Study Guides are available in the church office.

Zoom Information

<https://us02web.zoom.us/j/6729108287?pwd=aytMaXFCc2JYQXoxRGtuZXVUekJOUT09>

Meeting ID: 672 910 8287



CLC Grief Support Group

The community grief support group will be meeting **Tuesdays at 11AM weekly** in the "sofa room" of the educational building.

Please contact Silke in the office or via email if you would like to be part of a group of people who all grieve the loss of a loved one in different and individual ways but can now share the pain and suffering as well as the joys and hopes that life still has to offer.

Contact [Silke Pyrlík](#) for more information!



ALTAR FLOWERS

Sign up for Altar Flowers
For April, May, June, July, August
in the Ministry Lobby



FOR OUR VISITORS AND MEMBERS

Our prayers and sympathy are with Laura Marth and family
on the death of her mother, Edie Marth

Jackie Longo

Carla Holm

Gary Dolch

FOR CLC FRIENDS AND LOVED ONES

Michael Kolpaczyk (husband of Ann Hamnes neice)

Rachel Chester (friend of Karen & Eric Momberger)

Dan Beirne, (Judy Beirne's son) who is being
ordained as a pastor in the ELCA

Steve Hasley, (friend of Fran & Robin Baseline), heart surgery

Becky Bennett (friend of Fran & Robin Baseline), cancer

Mike Fidler (brother in law of Susie Fidler)

Susan Lamp (Susie Fidler's friend), cancer in her jaw, in rehab

Katherine Kirk, (mother of Carolyn Kern), who fell and hurt her knee.

Dana Brown (recurrence of cancer, friend of Linda Condor)

Calhoun Family (Lynn and Allen) friends of Patty Bassford

Richard Brooks (Patty Bassford's son)

Ruth Keightley, Carol Benton's mother

The people of Chimney Cove

Gary Gregory (Lois Gregory's son)

Jim Woods, son-in-law of Lois Gregory

Any prayer requests for Christ Lutheran members or friends can be shared with Linda in the church office at info@clchhi.com or with Pr. June at pastorjune@clchhi.com.

Please include the person's address that you wish us to pray for.

If you'd like to call the office, you can do so between 9:00 am and 3:00 pm Monday-Wednesday at (843)785-5560.

WHAT'S HAPPENING

Sunday, April 28

10:00 am Worship, 5th Easter

7 to 9 pm Choral Society Rehearsal, Sanctuary

Monday, April 29

10:30 am Funeral Services for Edie Marth, Sanctuary

Tuesday, April 30

10:00 am Office Staff Meeting, Meeting Room

11 am Grief Support Group, Sofa Room

Wednesday, May 1

3 to 5 pm Back Pack Buddies, Heinrichs Hall
5:30 pm Wednesday Night with Purpose, Heinrichs Hall

Thursday, May 2

10 to Noon Back Pack Buddies, Heinrichs Hall
4 pm Christ's Love Food Pantry

Friday, April 26

5:00 pm SHAG CLUB, Heinrichs Hall

**The Church Office hours have changed:
The hours for Linda Sheetz will be
Monday through Wednesday
9:00 am to 3:00 pm**

Christ Lutheran Church & Preschool | 829 William Hilton Parkway, Hilton Head Island, SC 29928

[Unsubscribe info@clchhi.com](mailto:info@clchhi.com)

[Update Profile](#) | [Constant Contact Data](#)
[Notice](#)

Sent by info@clchhi.ccsend.com