



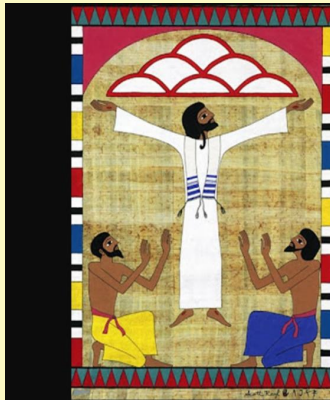
The Bridge

May 10, 2024



We are a
Reconciling in Christ
Congregation

[Click Here to read our
Welcome Statement](#)



Welcome to
Christ Lutheran

Ascension

Ascension

Sunday, May 12
10 am

LIVE STREAM
WORSHIP at 10 AM
on SUNDAY

Just click on the link! That's it!

[Click here for Sunday's Worship](#)

You can also find the link on the homepage of our website:

www.clchhi.org

Worship Team

Preacher & Presider: Rev. June Wilkins

Reader: Susie Fidler

Communion Assistants: Janet Garnjost & Marajeane Zodtner

Ushers: Ed Stafford

Greeters: Judy Beirne & Carla Reichelderfer

Altar Guild: Marajeane Zodtner

Our musicians this week are:

Rick Radcliff - piano, Susie Fidler, Steve Holm

Thanks to all our music leaders and volunteers!

To read Pr. June's Sermon from last week, click here:

<http://revjunewilkinssermons.blogspot.com/>

MARK YOUR CALENDAR

WEDNESDAY NIGHT WITH PURPOSE

STARTING APRIL 24 FOR 4 WEEKS



FREEFALL – FAITH AS A PARACHUTE

Learning to trust in times of fear and worry

Be part of our discussions as we discuss faith in times of struggle. We will take a closer look at God, Jesus, Salvation and Prayer, all essential ingredients on the quest to grow our faith and trust.

We meet at 5:30PM and start with a meal before we learn, discuss, build community, and grow in faith together.

MOTHER'S DAY BRUNCH



Please join us for CLC's Mother's Day Brunch immediately following the Sunday service on Mother's Day, May 12.

The menu will include delicious foods prepared by our Loyal Chefs! Let's honor all of CLC's Moms, Sisters, Aunts and Friends!

Please complete the reservation form in the bulletin or email Suzy Makalous at s.makalous@gmail.com with your RSVP.

Ushers Needed!!

Serving as a volunteer at CLC does not always require an extensive time commitment!

Being an usher is an integral part of our weekly service and is rewarding. You will be connecting with members, assisting with offering and communion and turning off lights and closing doors. That's it!

Please consider being an usher one of the following Sundays:

May 12	July 7
May 19	July 14
June 23	July 21
June 30	July 28

Please call Linda at the office or email Susie Fidler at susieqfidler@gmail.com to volunteer.

Make every Sunday a chance to connect with other church members and

CLC Hosting Peer Support Group

Starting July 15 at 5:30pm CLC will be hosting and facilitating a peer support group for LGBTQ+ members, families, friends, and allies. We meet on-site to discuss challenges at work, school, and home. We also share success stories, tips for coping, fears, tears, and hugs.



Council agreed that we would be a satellite site of the PFLAG Savannah Chapter.

The Savannah Chapter is also serving the Lowcountry and has been looking to extend their services into Hilton Head and Beaufort.

Silke Pyrlik (843-785-5560 or [email](#)) and Julie Raino are taking the lead. Please let either one know if you are interested in helping to facilitate the once-a-month (third Monday of the month) meetings!

**We would very much like to see our
members getting involved!
Let's talk!**



WHAT IS PFLAG?

PFLAG ([website](#)) an organization working to create a caring, just, and affirming world for LGBTQ+ people. PFLAG support families, educates allies, and advocates for equality through our network of supporters,

members, and chapters across the country.

Imagine this, roughly 50% of people who are LGBTQ+ are not out in their workplaces. Majorities of LGBTQ+ Americans say that they've experienced discrimination in their personal lives, in places like the workplace, housing, and education. Among LGBTQ+ youth in schools, nearly 60% say that they feel unsafe in their schools simply because of their sexual orientation, while almost 45% say they feel unsafe because of their gender expression.

In order to have a positive impact on these jarring statistics, PFLAG needs to have a spectrum of diverse voices expressing their support for equality and inclusion—and that includes people who are not members of the LGBTQ+ community. Allies have a unique power to send the message that inclusion and equality aren't just things that people in the group affected want (in other words, people who are LGBTQ+), but something

Flower Arranging

We need flower arrangers
for our Sunday Altar!

We have a fund for purchasing flowers,
you can arrange them here or at home
and bring the arrangement in on or before Sunday
Morning.

We'll teach you how to do everything.
No experience required!



If you would like to participate in this ministry,
contact Nan Stafford 540-230-2388

MEMBERSHIP



If you would like to become a
member (full time, part time, or associate) of Christ Lutheran,
contact Pr. June, pastorjune@clchhi.com or Silke at
silkepyrlik@clchhi.com Or see them on Sunday!

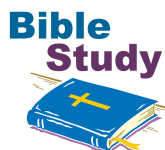
Men's Out to Lunch

**Mark your Calendar:
Wednesday, June 5 at 11:30 am.**

Come join the Men of CLC for lunch at

Benny's Coastal Kitchen, on Shrimpers Row just
off Squire Pope, **Wednesday, June 5, 11:30 am.**
Let's chat!

Please let Ray Makalous know you are coming
Rmakalous@gmail.com.



Wednesday ZOOM Bible Study 11 a.m. via Zoom

"Examining Our Faith" March 3 through May 26, 2024
We will NOT be having studies on April 24, May 1 and May 8.
We'll pick up again on May 15.

Participants in this study will reflect on God's steadfast love and faithfulness, modeled through God's covenant with Israel, Jesus' healing miracles, and the hope we share in his resurrection. We

are invited to respond by giving God glory through faithful witness in word and deed.

The members of this study group are from various ELCA congregations across the country who share a common desire to grow and serve. If you can't make it every week, that's okay. We'll welcome you as often as you can join us. Contact [Kathy Mork](#) for more info.

Study Guides are available in the church office.

Zoom Information

<https://us02web.zoom.us/j/6729108287?pwd=aytMaXFcc2JYQXoxRGtuZXVUekJOUT09>

Meeting ID: 672 910 8287



CLC Grief Support Group

The community grief support group will be meeting **Tuesdays at 11AM weekly** in the "sofa room" of the educational building.

Please contact Silke in the office or via email if you would like to be part of a group of people who all grieve the loss of a loved one in different and individual ways but can now share the pain and suffering as well as the joys and hopes that life still has to offer.

Contact [Silke Pyrlík](#) for more information!



ALTAR FLOWERS

Sign up for Altar Flowers

May, June, July, August, September,
October in the Ministry Lobby



FOR OUR VISITORS AND MEMBERS

Irmgard Drilling

Jackie Longo

Carla Holm

Gary Dolch

FOR CLC FRIENDS AND LOVED ONES

Pat Bottomly (friend of the Hamnes) on kidney dialysis in Virginia

Denise Scalph (dear friend of the Hamnes) in West Virginia.

Michael Kolpaczyk (husband of Ann Hamnes neice)

Rachel Chester (friend of Karen & Eric Momberger)

Steve Hasley, (friend of Fran & Robin Baselice), heart surgery

Becky Bennett (friend of Fran & Robin Baselice), cancer

Mike Fidler (brother in law of Susie Fidler)

Susan Lamp (Susie Fidler's friend), cancer in her jaw, in rehab

Katherine Kirk, (mother of Carolyn Kern), who fell and hurt her knee.

Dana Brown (recurrence of cancer, friend of Linda Condor)

Calhoun Family (Lynn and Allen) 1st cousins of Patty Bassford

Bob Brooke (Patty Bassford's son)

Shirley Snyder Edwards (Patty Bassford's Aunt)

passed away 3 weeks ago in Erie, PA.

Ruth Keightley, Carol Benton's mother

The people of Chimney Cove

Gary Gregory (Lois Gregory's son)

Jim Woods, son-in-law of Lois Gregory

Any prayer requests for Christ Lutheran members or friends can be shared with Linda in the church office at info@clchhi.com or with Pr. June at pastorjune@clchhi.com.

Please include the person's address that you wish us to pray for.

If you'd like to call the office, you can do so between 9:00 am and 3:00 pm Monday-Wednesday at (843)785-5560.

WHAT'S HAPPENING

Sunday, May 12

10:00 am Worship, 7th Easter

Mother's Day Brunch immediately following Worship

7 to 9 pm Choral Society Rehearsal, Sanctuary

Tuesday, May 14

10:00 am Office Staff Meeting, Meeting Room

11 am Grief Support Group, Sofa Room

Wednesday, May 15

5:30 pm Wednesday Night with Purpose, Heinrichs Hall

Thursday, May 16

4pm Christ's Love Food Pantry

Friday, May 17
NO SHAG CLUB TODAY

**The Church Office hours are:
Monday through Wednesday
9:00 am to 3:00 pm**

Christ Lutheran Church & Preschool | 829 William Hilton Parkway, Hilton Head Island, SC 29928

[Unsubscribe info@clchhi.com](mailto:info@clchhi.com)

[Update Profile](#) | [Constant Contact Data](#)
[Notice](#)

Sent by info@clchhi.ccsend.com